

Parish Archive

BCT's Birse Parish Archive continues to grow and develop. Exhibitions of photos from the Archive were held at the Old School in June and the Garden Party at Finzean House in August to mark 400 years of the Farquharsons in Finzean.

These exhibitions were attended by several hundred people and a great success. The display of photos of former Finzean School pupils and staff from the 1890s to 2009 resulted in names being put to quite a few faces and other photos being lent for copying.

The Parish Archive also houses BCT's natural heritage records. These include local habitat and species survey reports and wildlife records, as well as a wide range of related documents. BCT has recently update and developed the natural heritage catalogue that it maintains for this material.

BCT has also reviewed its local wildlife records against the priority habitats and species in the Cairngorms Biodiversity Plan that occur or may occur in Birse parish. BCT will be following this up by consulting over the habitats and species on which BCT should focus future survey work.



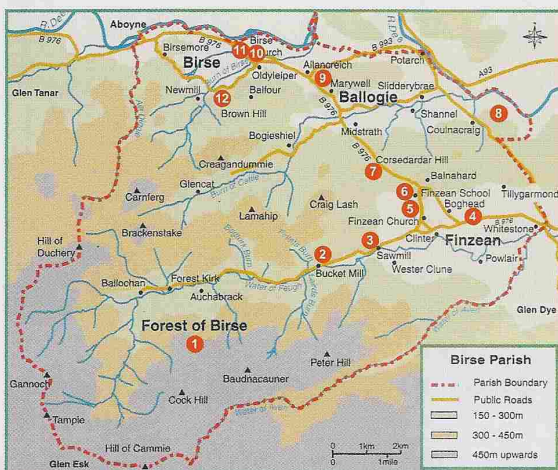
One of the exhibitions that were held during 2009 of old photos from BCT's Archive.



A recently donated photo that dates from the early 1990s and shows the bridge that used to cross the Feugh at the Laird's Burn upstream from the Bucket Mill.



A Dark Green Fritillary Butterfly at Finzean Sawmill last August.



Birse Parish

covers over 125 sq.kms. (50 sq.mls.) of Mid Deeside. The four main parts of the parish are the three local communities of Finzean, Ballogie and Birse and the largely uninhabited Forest of Birse. The total population is nearly 750 in around 280 households, with half of the parish's population and households in Finzean.



A view across the Dee into Slewdrum Forest, looking at one of the five small sites along the river banks where BCT removed stands of non-native conifers this winter to encourage native broadleaved woodland.

BCT is directly involved in managing twelve sites in Birse parish on behalf of the community. The sites are marked on the map and the legal basis of BCT's involvement in each is listed below.

- | | |
|--|--|
| 1. Forest of Birse Commonly
<i>ancient rights (> 3,750 ha.)</i> | 7. Corsedardar
<i>long term lease (< 1 ha.)</i> |
| 2. The Bucket Mill
<i>ownership (c.1 ha.)</i> | 8. Slewdrum Forest
<i>ownership (168 ha.)</i> |
| 3. Finzean Sawmill
<i>ownership (c.1 ha.)</i> | 9. Ballogie Soutar's Shop
<i>ownership (building only)</i> |
| 4. Finzean Community Woods
<i>ong term lease (15 ha.)</i> | 10. Balfour Wood
<i>long term agreement (241 ha.)</i> |
| 5. Finzean School Wood
<i>long term lease (< 1 ha.)</i> | 11. Birse Community Hall
<i>ownership (c. 0.2 ha.)</i> |
| 6. Finzean Old School
<i>ownership (c. 0.3 ha.)</i> | 12. Birse Kirk
<i>ownership (c. 0.1 ha.)</i> |

Woodchip Heating

BCT's plans to install a woodchip heating system to cover the Finzean Old School buildings, the School House and the Primary School have been delayed. As BCT's application to the Big Lottery for a grant was unsuccessful, BCT and Aberdeenshire Council are discussing other ways to fund the project. The purchase of Balfour Wood means that BCT will have a good supply of woodchips.