



Site Based Projects

1 Forest of Birse Community:

c.3,750 ha, ancient rights

Following an historic settlement in 1999, BCT holds ancient shared rights over the Community for the benefit of the local community. Through these rights, BCT manages the native pinewoods that cover over 550 ha. of the Community.

These woodlands are Scotland's most easterly surviving Caledonian Pinewood and managed by BCT to ensure their conservation and continued natural regeneration.

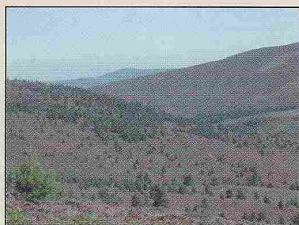


Photo by Rita Callander

2 The Bucket Mill:

c.1 ha. site & mill, ownership



Photo by Rita Callander

This Grade A Listed water mill dates from the 1850s and is unique in Britain with its specialised machinery for manufacturing wooden buckets. BCT is carrying out a major programme of restoration work at the Mill as part of

maintaining it as a working mill and has recently re-roofed the main mill building. BCT supplies the native pine used to make the buckets from the native pinewoods that BCT manages in the Forest of Birse Community.

3 Finzean Sawmill:

c.1 ha. site & mill, ownership

The Sawmill complex involves two Grade A Listed water mills, the Sawmill and the Turning Mill, both dating from the early 19th century. The mills are now fully operational following BCT's major restoration of the Sawmill, but further work is ongoing. BCT cuts timber from the Community pinewoods at the Sawmill for use on BCT projects. BCT has also supplied timber from the mill for the new Scottish Parliament building.

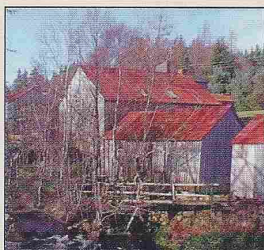


Photo by Rita Callander

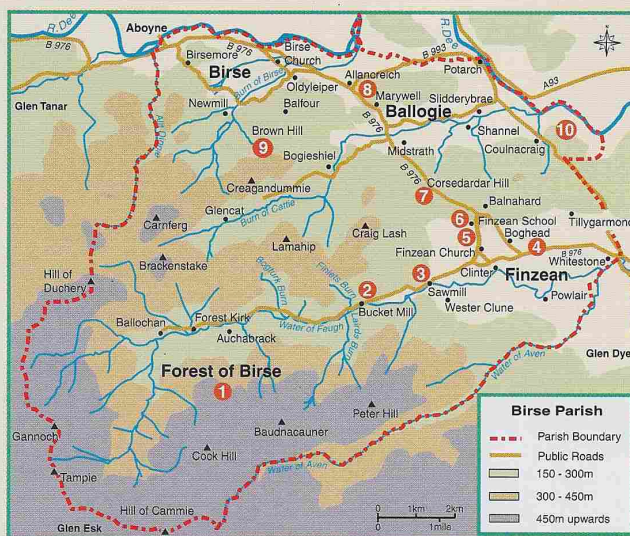
4 Finzean Community Woods:

15 ha, long-term lease

BCT manages the series of woodlands around Finzean Village, which include a circular path around the settlement. BCT continues to carry out routine maintenance and implement a wide range of improvements in the Woods. BCT's management won the Small Woods Award in the 2002 Scotland's Finest Woods competition.



BCT's Projects



Birse Parish covers over 125 sq.km (50 sq.mil) of mid Deeside and has a population of nearly 700 in c.260 households. The parish's four main parts form the basis of BCT's logo:- the communities of Finzean, Ballogie and Birse and the largely uninhabited Forest of Birse.

5 Finzean School Wood:

0.3 ha, long-term lease

BCT manages the School Wood with Finzean Primary School to enable tree planting and other uses of the site by the pupils. The site has some trees from "Plant a Tree in '73" and around a third of the current pupils are children of the children who planted those trees over 25 years ago.

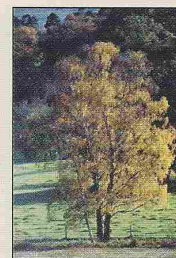


Photo by Finzean Forest Photography

6 Finzean Old School:

0.3 ha, long-term lease

BCT has been re-developing the Old School buildings in Finzean to safeguard their future and convert them for new uses to benefit the local community. BCT's own office has been set up in the main building and also additional office units created that BCT has made available to three other local businesses. The former soup kitchen building has been made into BCT's project work room and an environmentally controlled local history archive for safeguarding old documents and other items of local interest. BCT is currently in the process of buying the Old School buildings to ensure their long-term community use.

