



Chairman's Comments

WITH THE END OF 2000, the Trust completed its second year of operation and two years in which BCT has had to grow and develop very rapidly, working to the limits of its capacity most of the time.

BCT's Trustees greatly appreciate all the help and support we received from very many people during that challenging 'establishment phase'.

The Trust is now involved in a wide range of projects as illustrated by this newsletter. The Trustees, however, want BCT to have a greater and more tangible impact on social needs within the community and see this as a key target for the next phase of the Trust's development.

Our current local consultations on BCT's Strategic Plan for 2001-04 enable all of us as a community to take stock of BCT's progress to date and consider its potential development during the next three years.

We very much hope you will participate in these discussions. BCT belongs to all of us as a community and its continued success is a responsibility we all share.

Reverend Jack Holt
January 2001

Robin Callander (author and BCT Manager), Jack Holt (BCT Chair) & David Duncan (sawmiller) at the launch of BCT's new edition of "History in Birse" at Finzean Sawmill in October. The book's cover photo shows David's grandfather in the 1890s supervising the last re-build of the sawmill before the Trust's major restoration in 1999/2000.

Acknowledgements

BCT IS EXTREMELY GRATEFUL to everyone whose donations, grants, goodwill and other forms of help have supported BCT so far.

BCT very much appreciates the funding and support in-kind that it received from the following organisations for its work during 2000:- Aberdeenshire Council, Aberdeen City Council, BP, Duncans of Deeside, Deeside Business Services, Drum Tree Nursery Group, Forestry Commission, Glen Tanar Charitable Trust Ranger Services, Historic Scotland, Marr Area Partnership, Millennium Forest for Scotland Trust, North East Rivers Project, Prince of Wales's Charitable Foundation, Scottish Enterprise Grampian, Scottish Natural Heritage, Scott Sutherland School of Architecture and James Thin Charitable Trust.



A MILLENNIUM PROJECT
SUPPORTED BY FUNDS
FROM THE NATIONAL LOTTERY



Photo John Anderson

Histories of Birse

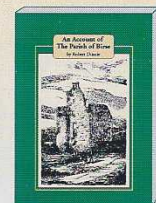
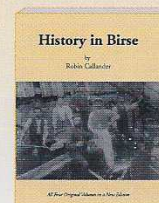
You can order copies of the Trust's publications *post free* (UK only) direct from BCT:-

Robert Dinnie's "An Account of the Parish of Birse"

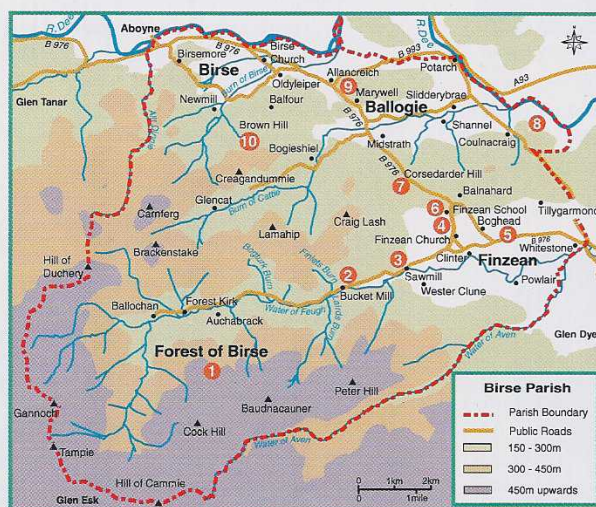
£8.50 (£7 for BCT members)

Robin Callander's "History in Birse"

£9.75 (£8 for BCT members)



Birse Parish covers over 125 sq.km (50 sq.mls.) of Mid Deeside and has a total population of nearly 700 in c.260 households. The four main parts of the parish that form the basis of BCT's logo are the communities of Finzean, Ballogie and Birse and the largely uninhabited Forest of Birse. The sites that BCT is directly involved in managing are marked on the map and listed below with the legal basis of that involvement:



1. Forest of Birse Commonty (c.3750 ha, ancient rights)
2. Bucket Mill (c.1 ha, ownership)
3. Finzean Sawmill (c.1 ha, ownership)
4. Finzean School Wood (c.0.3 ha, long-term lease)
5. Finzean Community Woods (15 ha, long-term lease)
6. Finzean Old School (long-term lease pending)
7. Corsedarder (0.3 ha, long-term lease)
8. Slewdrum Forest (155 ha, long-term agreement)
9. Ballogie Souter's Shop (building only, ownership)
10. Balfour Wood (240 ha, long-term agreement)

Supporting BCT

PLEASE SUPPORT BCT and its local projects by becoming an Associate Member of the Trust. The subscription is £20 (£25 overseas) for twelve months. Members receive free copies of BCT Updates, other mailings, special opportunities to visit BCT's projects and discounts on BCT's publications.

The Trust also greatly appreciates any donations, as these are vital in enabling the Trust to take forward its work.

BCT Address

The Manager,
Birse Community Trust,
Haughend, Finzean,
Banchory AB31 6PP
tel. 01330.850264
fax. 01330.850264
e.mail callander-r@sol.co.uk