



Acknowledgements

BCT IS EXTREMELY GRATEFUL to everyone whose goodwill, donations and other help has supported BCT so far.

Gifts & Donations

BCT has a special debt to everyone who vested in BCT their ancient rights over the Forest of Birse Community and for the free transfer to BCT of the ownership of Finzean Sawmill by Donald Farquharson and the Bucket Mill by the Finzean Water Mills Trust. BCT also greatly appreciates the financial donations it has received from individuals, the Bacon Charitable Trust, Prince of Wales's Charitable Foundation and Birse & Feughside Church, and for support in kind from Duncan's of Deeside, Finzean Estate Partnership, Scottish Native Woods and Glen Tanar Charitable Trust Ranger Service.

Grants

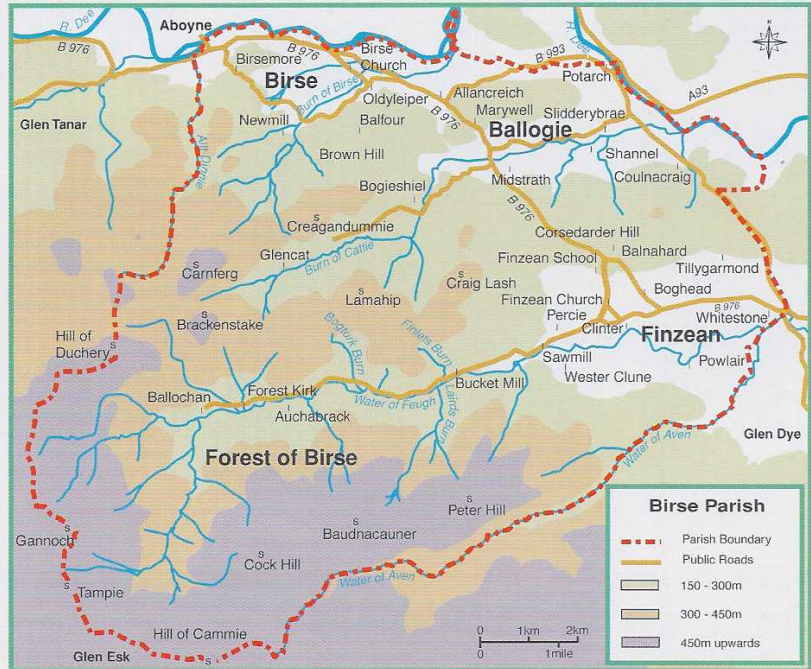
BCT also very gratefully acknowledges the project grants that it has been awarded by the Millennium Forest for Scotland Trust, Forestry Commission, Cairngorms Partnership, Aberdeenshire Council, Kincardine and Deeside Enterprise Trust, Grampian Enterprise, Historic Scotland, Network Foundation, James Thin Charitable Trust and International Tree Foundation.

Millennium Forest project

BCT's Millennium Forest Project is one of around 80 projects that form the Millennium Forest for Scotland, a National Lottery funded initiative to celebrate the new millennium by restoring and regenerating Scotland's native woodlands. The core of BCT's project is the Community pinewoods. Other parts involve Finzean Sawmill, Finzean School Wood and Community Woods and Corsedarder.



A MILLENNIUM PROJECT
SUPPORTED BY FUNDS
FROM THE NATIONAL LOTTERY

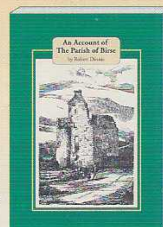


Birse covers over 125 sq.kms (50 sq.mls.) of Mid Deeside and has a total population of c.700 in c.260 households. The map shows the 4 main parts of the parish that form the basis of BCT's logo: the three scattered rural communities of Finzean, Ballogie and Birse and the largely uninhabited Forest of Birse.

History of Birse

A limited edition of 1000 copies of Robert Dinnie's classic "An Account of the Parish of Birse" (1865) has been published by BCT. This 160 page book contains a wealth of historical information.

Copies cost £8.50 *post free* from BCT, with the special discount price of £7 *post free* (UK only) for BCT's Ordinary & Associate Members.



BCT Address

The Manager,
Birse Community Trust,
Haughend, Finzean, Banchory
AB31 6PP
tel. 01330.850264
fax 01330.850264
e.mail callander-r@sol.co.uk

Making a Donation

DONATIONS TO BCT from individuals and organisations, most commonly amounts of £20 to £50, continue to play a vital role in the Trust's development. This support is greatly appreciated by the Trust. Please consider making a donation to help the Trust's work.

Becoming an Associate Member

Anyone who lives outside Birse and is thus not an Ordinary Member of BCT, can join BCT as an Associate Member by paying BCT's annual subscription. Associate Membership runs for twelve months from the date of joining and includes two issues of BCT Update plus the same special discounts as Ordinary Members on BCT's publications and other local heritage products. Only one subscription is needed per address.

Please support BCT by becoming an Associate Member. Subscriptions (£20 UK; £25 overseas) should be sent to BCT's address on the left.

The production of this newsletter has been sponsored by the Cairngorms Partnership and Aberdeenshire Council. Update design by Hallowell Publications (01882) 634254